



All pictures shown are for illustration purpose only. Actual product may vary due to product enhancement.



# PES PILOT HDpro

The new standard in videoendoscopy

**otoprnt**<sup>®</sup>



# PES PILOT HDpro

The PES PILOT HDpro videoendoscopy system aims to set new standards with regards to **image quality, handling and functionality**.

For the PES PILOT HDpro we created a completely new, very intuitive software, like an app on your smartphone, in order to allow immediate use without training, for a very fast and convenient workflow during examination.












Thanks to numerous IT connections (e.g. DICOM conformance), the PES PILOT HDpro can easily be integrated into many IT-systems of the doctors offices.

Additionally we equipped the PES PILOT HDpro with our highly sophisticated Full-HD C-MOS camera chip, which delivers extremely sharp images of highest contrast.

The whole system corresponds to German quality standards and it is built to last.

These features distinguish the PES PILOT HDpro creating a ground-breaking future-proof design to enable ENT professionals to work more efficiently.

## Why choose for PES PILOT HDpro?

 Superior image quality (Full-HD video & picture)	 Otopront Picture Enhancement (OPE) for higher contrasts
 Simple editing and comparison software for search function included	 Add ons: Lightsource or completely integrated stroboscopy
 Ease of use - Intuitive and simple software	 Safety measures: Immediate data saving on internal storage
 Complete patient database and data handling	 Future proof: New developments will be available
 High connectivity: DICOM, HL7 possible USB storage, printer	 Quality Made in Germany
 Frameless screen	

# PES PILOT HDpro - available with 15.6" or 21" touchscreen



## Superior handling

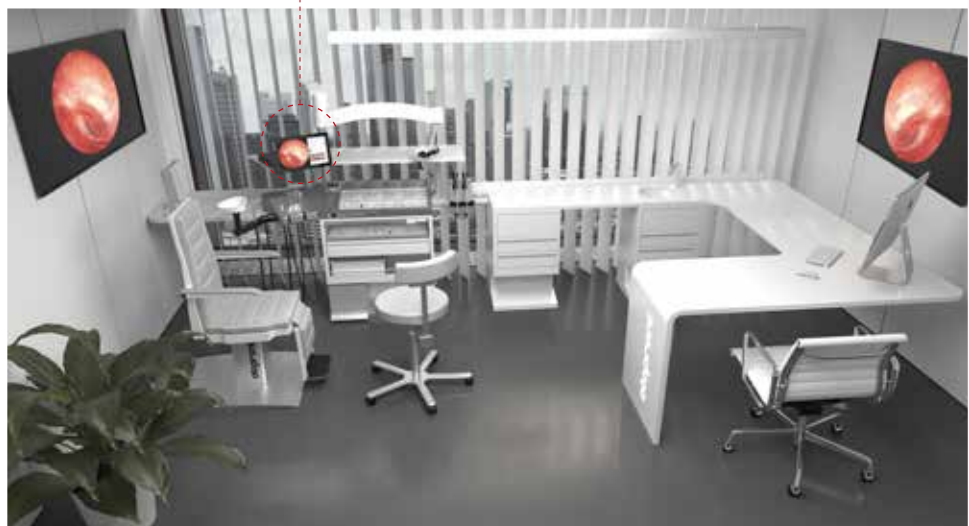
With its front-mounted **touchscreen** and **compact** size the device can be incorporated directly into the working area (e.g. at the ENT unit). All functions can be operated conveniently by touchscreen, allowing the user to work as efficiently as possible.

**Additional monitors** can also be connected to the PILOT-screen. Placing a monitor behind the patients chair, simplifies the endoscopy process enabling the doctor to have a direct view of the screen.

The other way around, detailed results can be shown to the patient on an additional **patient monitor**. The patient monitor can be disabled at any time.



Findings can be tagged by touching the image directly



Workstation with centrally positioned PES PILOT HDpro with examination and patient screen

## App-like software handling

### Clearly structured and user friendly patient management

Patient data can be saved directly to the **internal memory** or to a **USB stick**. In addition, data can be exchanged automatically with the **practice IT system** or the **HIS**.



Intuitive operation and navigation by touch or mouse

The device can be **operated completely intuitively**. Still photo/video mode is selected by **foot switch** or by shutter release on the **touchscreen**. Then the findings can be tagged directly on the PILOT-screen using the fingertip control. All the functions, such as selecting an image or zoom, are equal to operation on your smartphone.



Camera system in examination mode with video editing

The software facilitates the **comparison of pictures** of the patient for the diagnostic. The selection of the pictures is very intuitive and easy to handle.



Intuitive comparison software

## Complete network integration

- + Easy installation in practice computer (e.g. Medistar, Turbomed, Albis, tomedo etc.) via GDT protocol
- + Complete integration into HIS and PACS via standard interfaces (HL7, DICOM compliant) possible
- + DICOM Conformance Statement
- + Optionally transferring video data, communicating with worklists (e.g. DICOM video, DICOM worklists)
- + Automatic order recognition of the practice computer, alternatively at the push of a button

## High performance stroboscopy (Option)

### Compact, yet complete

- + Full-HD image and video capture (optionally 4K)
- + LED stroboscope light source
- + 15.6" or 21" touchscreen and computer
- + Patient- and findingsmanagement
- + Fiberoptic Endoscopic Evaluation of Swallowing (FEES)
- + DICOM compliant
- + C-MOS chip technology



### Crisp and sharp by precise, extremely short flashlight, high resolution by Full-HD

The **highly efficient Otopront LED light source** specially developed for stroboscopy allows very short exposure times, which together with the Full-HD camera (optionally 4K) creates crisp and sharp images of the movements of the vocal cords.

Because of this, the PES PILOT HDpro stroboscope plays in the league of professional stroboscopy towers, but in a compact design.

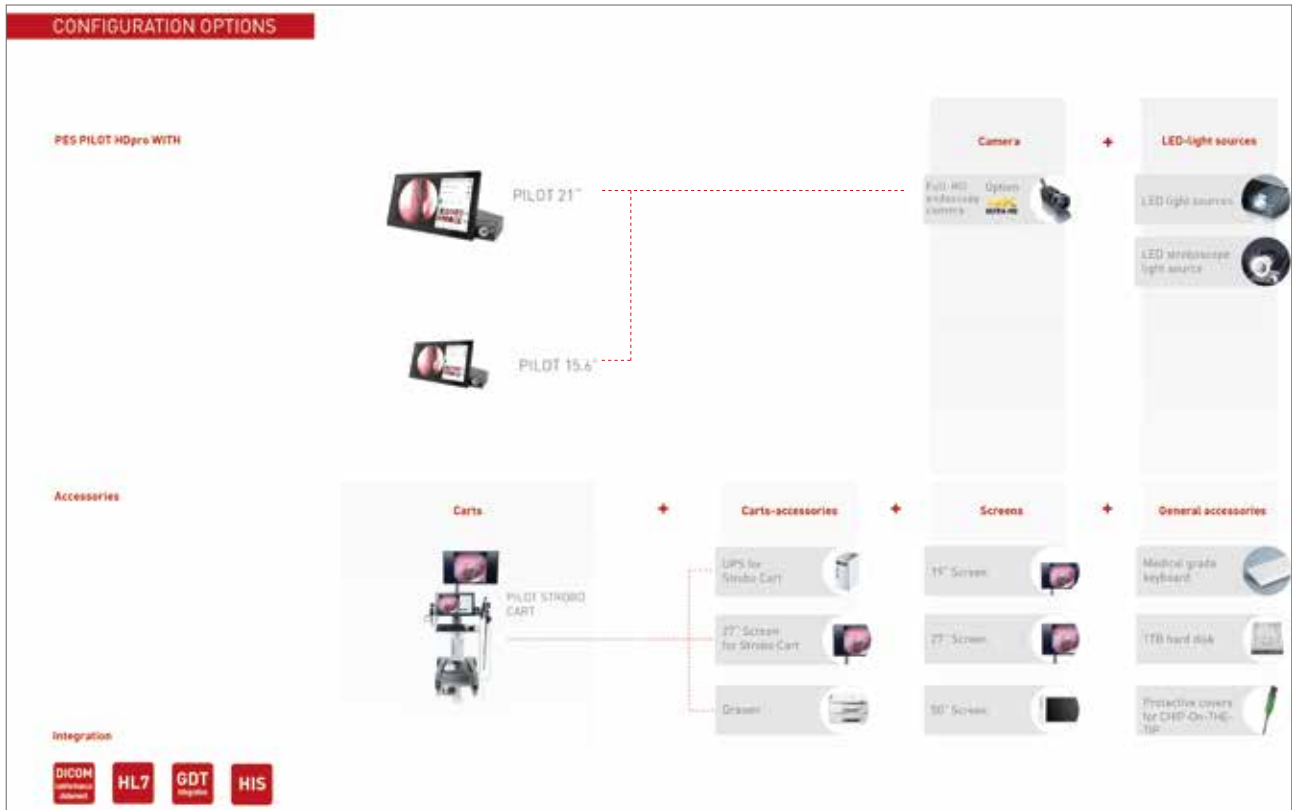


## Otopront Picture Enhancement

**Otopront Picture Enhancement (OPE)** uses histological-physical findings to visualize tissue structures in greater detail through the differentiated use of blue and green spectral components. The technique takes advantage of the effect of the different absorptivity of capillary vessels and surrounding tissue. This technology can be used to visually highlight conspicuous vessel and tissue patterns.



# Features & Options



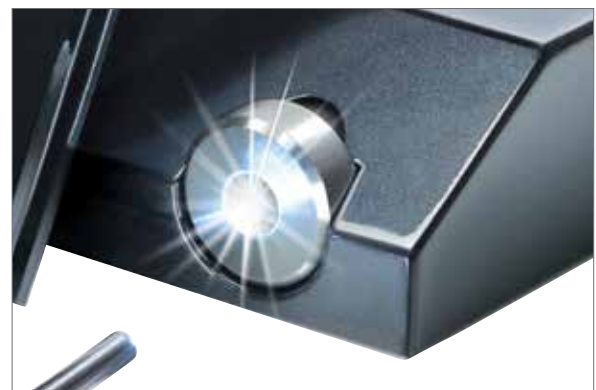
PES PILOT HDpro with Strobe Cart and UPS



Camerahead



Footswitch



LED stroboscope light source

# Technical data

Model: PES PILOT HDpro with 15.6 inch touchscreen  
PES PILOT HDpro with 21 inch touchscreen

## System

- + High performance system with quad core processor
- + 256 GB internal SSD memory (up to 1 TB optional) for approx. 30 hours video recording or 20,000 images

## Hardware interfaces

- + Data storage on USB stick
- + 2 LAN ports for connecting to printer and practice's IT system
- + Up to 2 monitor interfaces (DVI/ HDMI)
- + Connections for mouse and keyboard, wireless optional

## Communication interfaces

- + Easily integrated into practice's IT system via GDT protocol
- + Automatic order recognition of the practice EDP, optionally at the push of a button
- + Total integration into HIS and PACS via standard interfaces (HL7, DICOM compliant)
- + Optional transfer of video data, communication with worklists (e.g. DICOM video, DICOM worklists)

## Touchscreen

- + Screen can be tilted forwards and backwards approx. 45°
- + Size: 15.6 or 21 inch
- + Touch function: capacitive (so can be operated without loss of contrast or brightness)
- + Resolution: 1920 x 1200 pixels (full HD)
- + Brightness: 400 cd/m<sup>2</sup>, LED backlight, contrast: 700:1
- + Viewing angle: 178° horizontal and vertical

## Camera

- + Up to 2 cameras on one PES PILOT HDpro
- + Sensor chip: 1/2" C-MOS chip technology with maximum use of low light and colour tone
- + Resolution: 1920 x 1200 pixels (full HD), 2.23 MP
- + Shutter device: global shutter technology for optimum videostroboscopy
- + Maximum number of images per second: 180
- + Lens: 0.83 inch, quick focus
- + Lens connection: C-mount

## Case

- + Material: sheet steel, painted, available in all RAL shades
- + Optional lift handle for transportation

## Dimensions

- + Case: 12.2 x 8.26 x 1.77 inch
- + Screen: 15.6": 16.33 x 9.44 x 0.98 inch / 21": 22.48 x 13.38 x 1.29 inch
- + Weight: 15.6": 14.33 lbs / 19.84 lbs

## Hygiene

- + Camera system together with cable can be fully inserted
- + Retractable film can be pulled over touchscreen for safe operation

## Rated output

- + 110-230 V, 50/60 Hz, 60W

## Device

- + Type BF

## Happersberger otopront GmbH

Medical Equipment Manufacturer  
D-65326 Hohenstein · P.O. Box · Germany  
Tel. +49 6120-9217-0 Fax +49 6120-9217-60  
www.otopront.de · info@otopront.de