



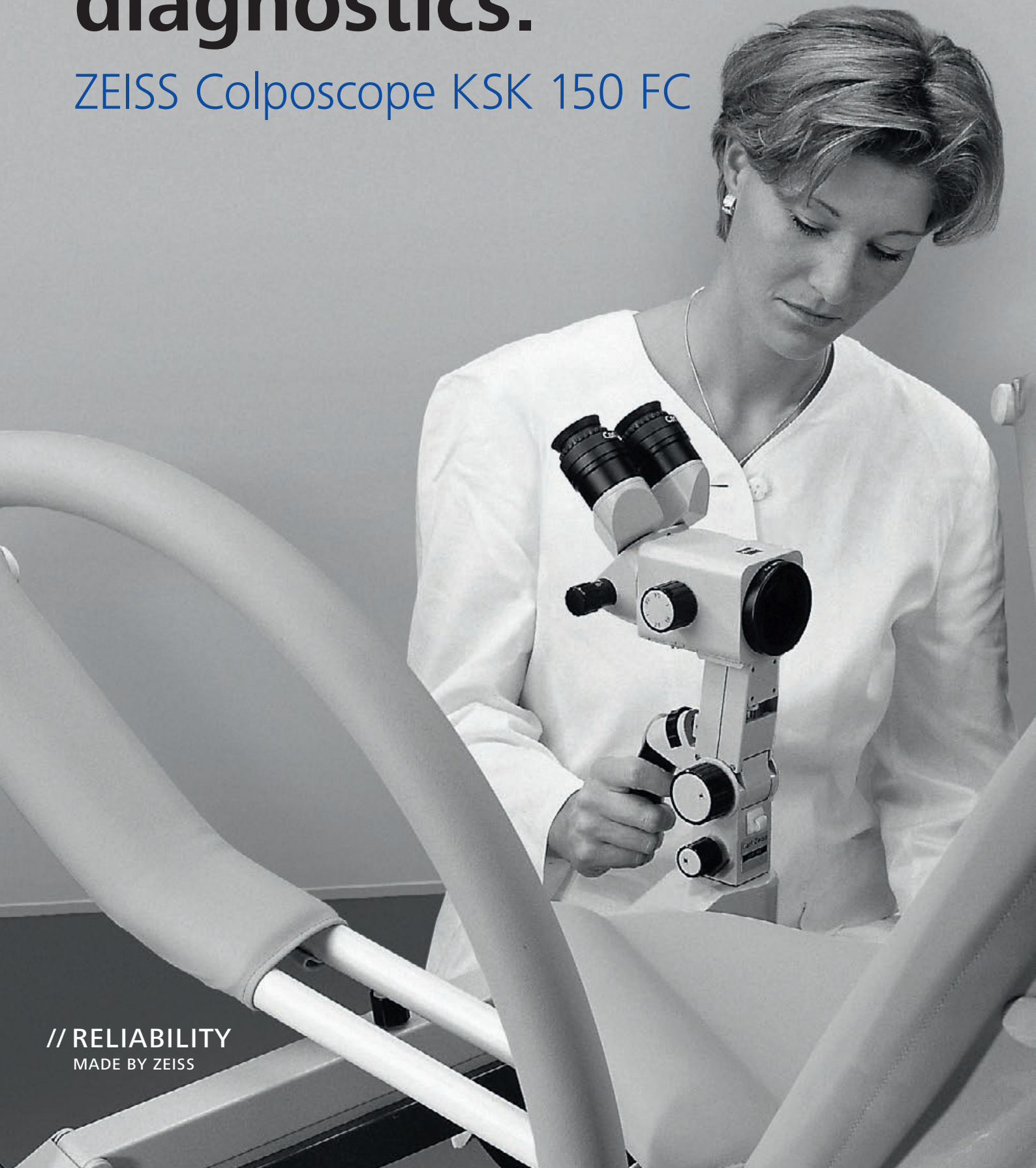
Colposcope KSK 150 FC from ZEISS

Enabling enhanced diagnostics



Enabling enhanced diagnostics.

ZEISS Colposcope KSK 150 FC



// RELIABILITY
MADE BY ZEISS

ZEISS Colposcope KSK 150 FC

High-quality optics

The ZEISS KSK 150 FC is a versatile colposcope meeting the demands of busy gynecological clinics:

- High-intensity fiber optic illumination via integrated light guide allows you to clearly recognize color differences in the epithelium and visualize tissue patterns.
- Convenient, single-hand operation using the ergonomically arranged controls allows fast and reliable positioning.
- Large fine focusing range for selectable working distances.
- 5-step magnification changer offers a general overview at low magnification and clear recognition of detail at high magnification.



- Widefield optics for a large field of view facilitate the assessment of anomalies in the epithelium, enabling differential diagnosis.
- Attachable to suspension mount / examination chair or floor stand – depending on your requirements.
- Straight or inclined binocular tube enables ergonomically correct viewing conditions.
- Optional 1Chip HD Camera for documentation of findings and patient consultation.



Performance features of the Colposcope KSK 150 FC from ZEISS

Illumination	12 V / 100 W cold light, fiber optic illumination, adjustable
Objective lens	250 mm or 300 mm focusable
Magnification	Manual magnification changer with five settings
Total magnification	3.5x–21.5x (at working distance of 250 mm, 12.5x eyepieces)
Fine focusing	18 mm
Viewing tube	Inclined or Straight or Tilttable tube
Red-free filter	Swing-in
Suspension mount	Rolling floor stand or suspension mount (connecting tube for examination chair)
Video camera (option)	1Chip HD Camera, 1CMOS 1080p, DVI, HD-SDI, S-Video

Seeing and identifying

Impressive outcomes

Both clinician skill and high-quality optics are essential in recognizing precancerous changes.

ZEISS has been at the forefront in developing and producing world-class optical designs for over 170 years enabling crisp rendition of healthy or abnormal tissue.



1. Colposcopy: before acetic acid (5%)



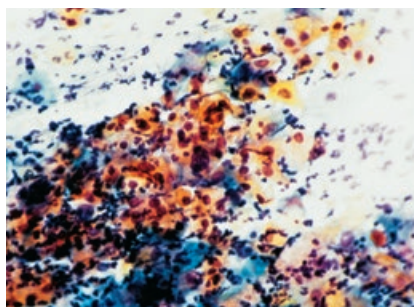
2. Colposcopy: after acetic acid (5%), rag sign (major change)



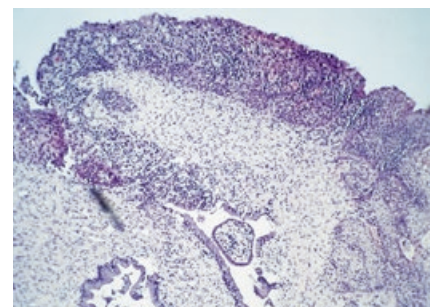
3. Colposcopy: Ovula Nabothi



4. Colposcopy: acetowhite reaction: inner border sign, cuffed glands (major change), TZ 2



5. Cytology: signs of keratinization with dyskeratosis of all layers. Suspected CIN III, Pap IVA



6. Histology: CIN III

Image courtesy of:

1.-4.: PD Dr. med. Volkmar Küppers, Düsseldorf, Germany
5.-6.: Dr. med. Peter Schomann, Lüneburg, Germany

Powerful accessories

For visualization and effective documentation of your work

Digital visualization

The video camera allows you to visualize your colposcope image in state-of-the-art, full-HD picture quality. This enables you to display relevant tissue structures in finer detail than with standard definition cameras. The live image display on the monitor can be used for patient consultations. High contrast and ideal image definition are ensured through the built-in ZEISS video optics. The camera starts with a specialized, pre-defined configuration for colposcopy and is therefore instantly ready to use for this application.



Digital visualization: 1Chip HD Camera



Digital photography: FlexioStill & FlexioMotion

Video and photo documentation

Combining the video camera with the HD video recorder allows you to digitally save your high-quality colposcope images. You can choose between photo and video storage. Also, you are able to select USB storage or configure the recorder to directly transmit your image data to a network storage system.



Laser attachment

Digital photography

ZEISS can provide you with variable camera adapters such as the FlexioStill and FlexioMotion to attach digital cameras to the colposcope. Documentation of your patient has never been easier.

Chair attachment

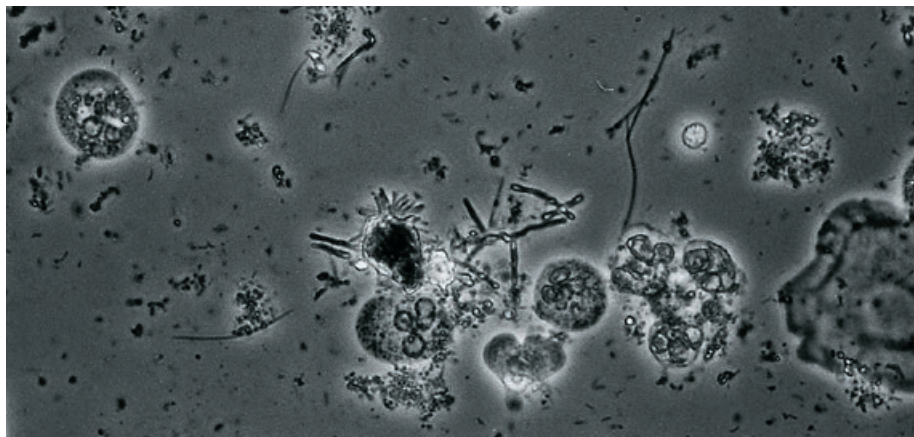
Using an appropriate mount, the colposcope can be attached to examination chairs from different manufacturers. Mounts for attaching connecting tubes to examination chairs are available from the respective chair manufacturer.

Laser attachment

An external micromanipulator can be directly attached to the colposcope to perform CO₂ laser therapies.

Light microscopes from ZEISS

Make the examination complete



The early diagnosis of abnormalities of the *Cervix uteri* is ideally supported by cytological findings. The native smear is also an integral part of the patient examination: it allows fast diagnosis and hence facilitates therapy of inflammatory processes.

ZEISS light microscopes offer benefits for use in gynecology:

- High-quality optics
- Ease of use and flexibility
- Upgradeable for advanced fluorescence techniques



Light microscope manufactured by Carl Zeiss Microscopy GmbH.

ZEISS OPMI pico

For routine and more intricate procedures

OPMI® pico from ZEISS is a compact, high-performance, easy-to-use surgical microscope.

- High-intensity fiber optic illumination
- Ergonomic arrangement of all controls
- Objective lens with fine focusing
- 5-step magnification changer
- Widefield optics
- Very mobile floor stand with four easy-to-move, lockable casters
- Suitable for SAD (Sexual Assault Documentation)

ZEISS OPMI pico is available in various configurations:

- Straight or inclined binocular tube for excellent ergonomics
- You can choose between three integrated HD video camera versions: HD-ready 720p, Full HD 1080p or live & streaming (Full HD 1080p) with recording license.



S100 / OPMI pico

Performance features of S100 / OPMI pico from ZEISS

Illumination	Halogen or LED
Objective lens	300 mm, focusable or 250 mm, focusable or Varioskop® 100, focusable working distance 200–300 mm
Magnification	Manual magnification changer with five settings
Viewing tube	Straight binocular tube, f=170 mm or 45° inclined binocular tube or 180° swiveling binocular tube
Red-free filter	Swing-in
S100 suspension mount	Floor stand or Wall mount or Ceiling mount
Integrated HD video camera (option)	HD-ready 720p or Full HD 1080p or Live & streaming (Full HD 1080p) with recording license





KSK 150 FC
S100 / OPMI pico



ZEISS light microscopes



Carl Zeiss Meditec AG
Goeschwitzer Strasse 51–52
07745 Jena
Germany
www.zeiss.com/gyn
www.zeiss.com/med/contacts



Carl Zeiss Microscopy GmbH
Koenigsalle 9–12
37081 Goettingen,
Germany
www.zeiss.com/microscopy
microscopy@zeiss.com